

R-1 Rapid Deployment Inflatable Isolation Enclosure

R-1 package provides a rapid deployment inflatable isolation enclosure for single-person. Able to be used as a isolation inflatable or can be used in-conjunction with high oxygen, hyperoxic equipment.



Features

Rapid deployment, easy to set up in 5 minutes or less.

Isolation enclosure creates physical barrier between patient and medical staff.

Full immersion in high oxygen air is critical for optimal patient care.*

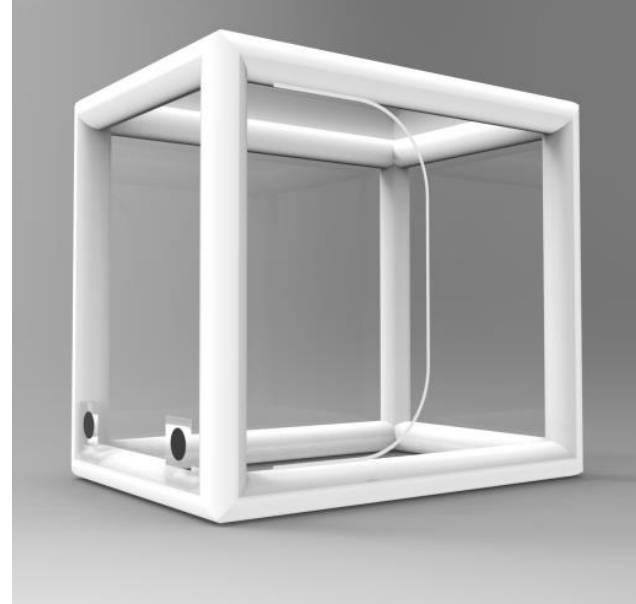
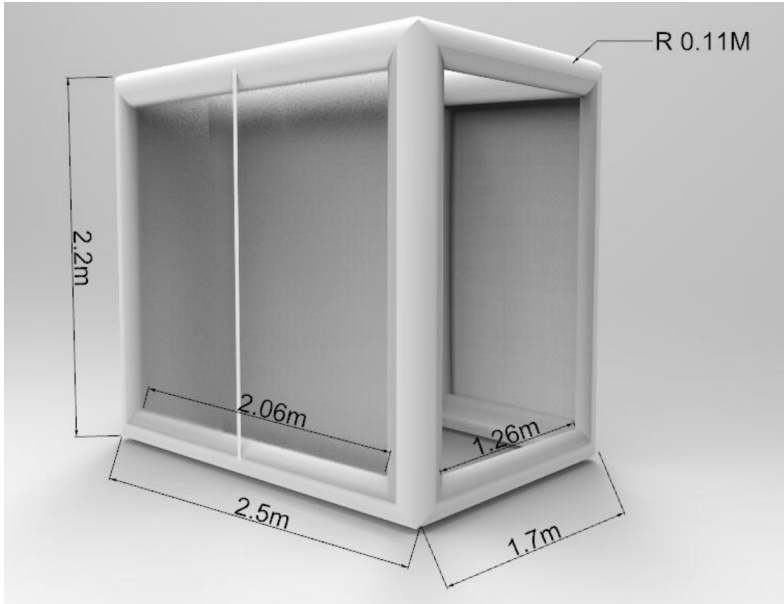
Dual zipper ports for electrical and oxygen air lines.

Zipper openings on both sides.

Clear design for staff to monitor patients.

R-1

Rapid Deployment Inflatable Isolation Enclosure



Model No.:	R-1
Model Name:	Rapid Deployment Inflatable Isolation Enclosure
Product Inclusions:	Inflatable isolation enclosure with clear front, top and sides. Vertical entry zippers on both sides. External piping connection entry points on the left side lower section.
Tube Safety Feature:	Over pressure relief valve system
Dimension (l x w x h):	2.5m x 1.7m x 2.2m
Tube Diameter:	22cm
Setup Time	5 minutes
Max No. of People:	1
Material:	Tubes - PVC Clear Roof/Walls - PVC Clear
Color of Tubes:	White
Net Weight:	20kgs
Warranty:	24 Months